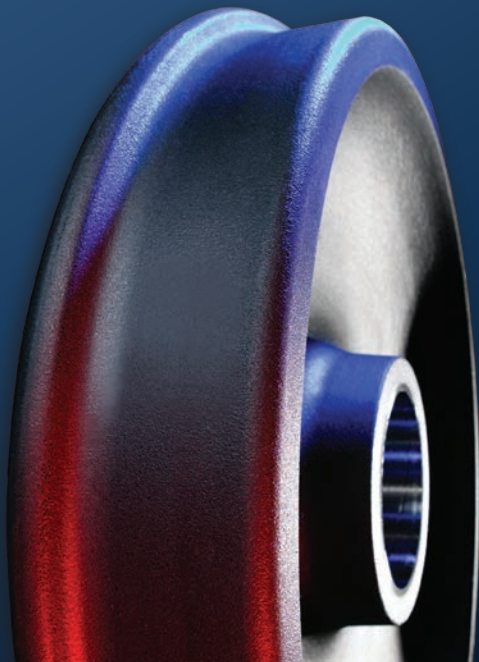


AMSTED RAIL - GRIFFIN® WHEELS



**The global leader in railway wheels.**



*A world apart in reliability* **Amsted Rail®**



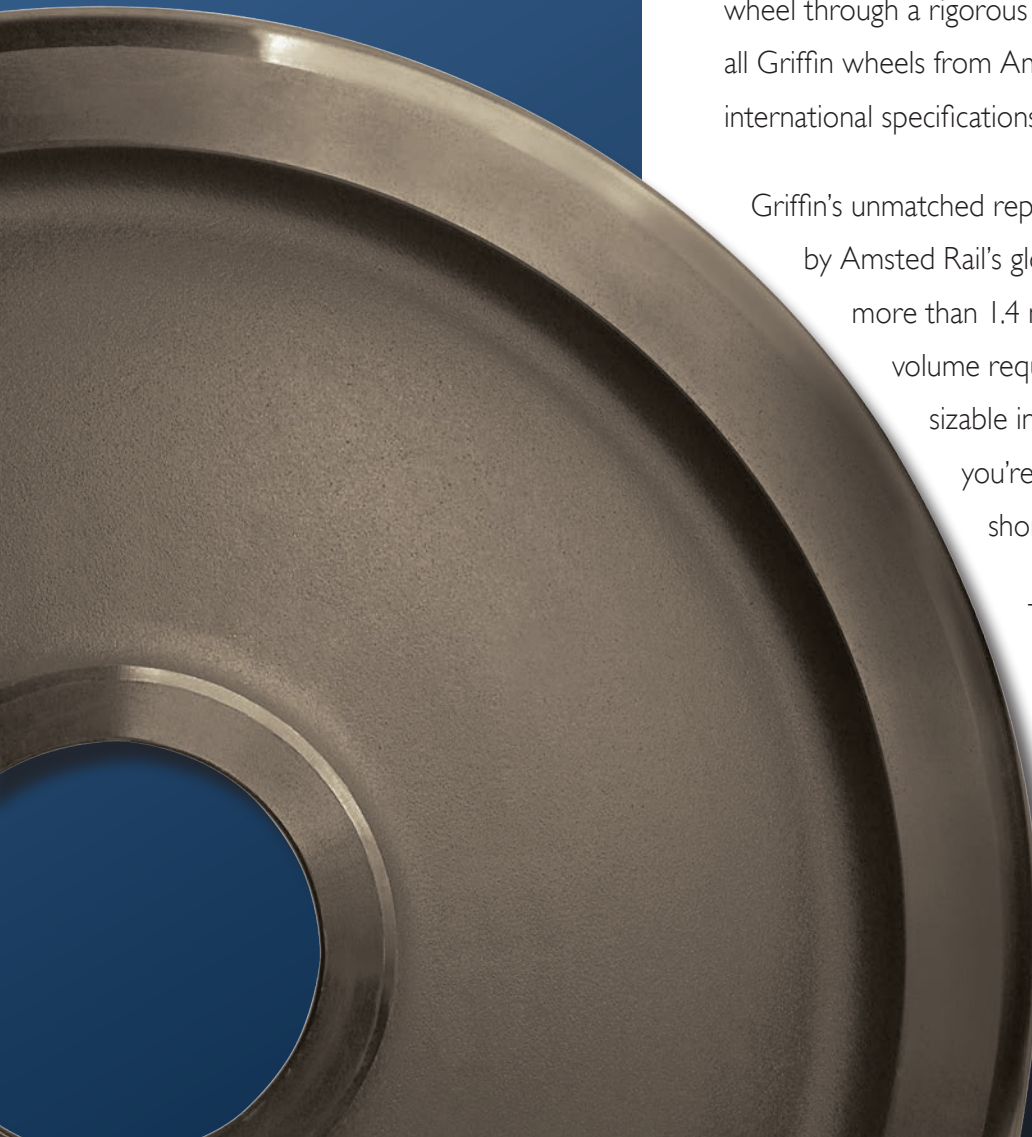
## Keeping the heavy haul world on a roll

For over a century, the Griffin wheel brand has been at the forefront in wheel design, manufacturing innovation and reliability. Now an integral part of Amsted Rail, Griffin is making an even stronger commitment to industry-leading safety and innovation. The latest advance is Griffin's patented Micro Alloy® wheel which is already setting the standard worldwide by providing greater strength at higher temperatures, resulting in fewer wheel-set removals and dramatically longer wheel life.

It's just one more way Amsted Rail's Griffin wheels keep the heavy haul world rolling in the most demanding service. Griffin uses a unique pressure pouring process to ensure steel cleanliness and consistent dimensions such as tape size and rim thickness. Then we put every wheel through a rigorous inspection process. The result: all Griffin wheels from Amsted Rail meet or exceed AAR and international specifications.

Griffin's unmatched reputation for safety and reliability is backed up by Amsted Rail's global manufacturing capacity. We can make more than 1.4 million wheels annually, and can meet any volume requirements. With multiple plant sites and a sizable inventory of the most common wheel types, you're assured fast, dependable delivery and the shortest order lead times in the industry.

Technological innovation. Engineering excellence. Global manufacturing capacity. 24/7 customer support. No wonder we provide more wheels to the rail industry than any other wheel manufacturer.





---

## Wheels to meet every railcar and locomotive need

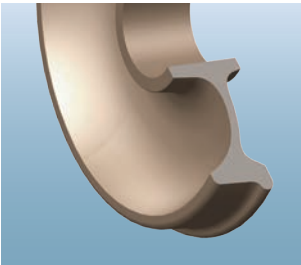
Amsted Rail's Griffin wheels feature the most comprehensive product line in the heavy haul industry. Whatever your requirements, you can count on Amsted Rail to deliver the highest quality, most reliable rail wheels for the long haul.

---

### Micro Alloy®: The toughest wheel on the market

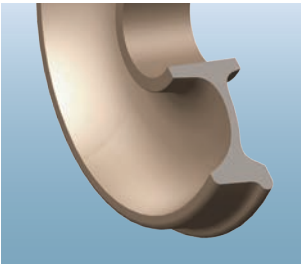
How tough is Griffin's patented Micro Alloy wheel? Tough enough to demonstrate 72% longer wheel life when tested under rugged, real world heavy haul conditions. That 72% reduction in wheel set removals translates into lower freight car operating expenses, less time for wheel maintenance, and enhanced "fluidity of the service."

Made from a patented material that provides increased resistance to thermal degradation, nothing can take the heat at higher temperatures like the Griffin Micro Alloy wheel. Available in multiple wheel diameters, including locomotives.



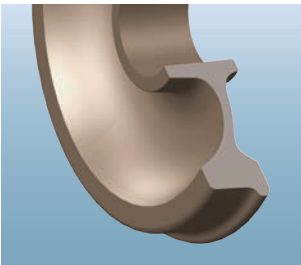
### AAR Standard One-Wear: The world's best-seller

A real workhorse that can stand up to today's demanding heavy haul services around the world, the AAR Standard One-Wear wheel is the go-to choice for proven reliability and durability. AAR Standard One-Wear wheels are available in 28", 33", 36" and 38".



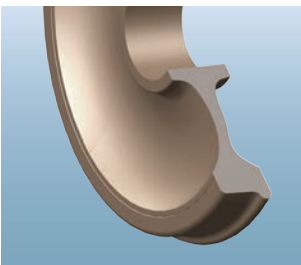
### One-Wear Plus: The plus in higher mileage situations

If you're looking to add more miles to your wheel's life, take a close look at the One-Wear Plus. It provides additional tread service metal for cars in higher mileage freight car service, which can lead to extended service life.



### Two-Wear and Multi-Wear Wheels: Extra thick for extra life

When your wheels get worn down, you can bring them back to life with our Two-Wear and Multi-Wear Wheels. Made of extra rim thickness, it allows a worn wheel to be machined and restored to its original shape multiple times during its lifetime.



### Locomotive Wheels: Various sizes for multiple applications

Griffin has been in full production of diesel wheels since 1966. Using our proven design, we produce diesel wheels cast to such close tolerances that they are better balanced than other wheels, contributing to maximum traction and longer wheel life.

---





## About Amsted Rail

Amsted Rail has been an industry leader in freight railroading for more than 100 years. Our experience, dedication and efficiency in servicing today's demanding heavy haul operations is unequalled as we keep railcars rolling in some of the world's toughest railroad environments. To learn more, visit [www.amstedrail.com](http://www.amstedrail.com).

**Amsted Rail**<sup>®</sup> *A world apart in reliability*

[www.amstedrail.com](http://www.amstedrail.com) | +1.312.922.4501 | 311 S.Wacker Drive, Suite 5300, Chicago, IL 60606  
© 2012 Amsted Rail Company, Inc.