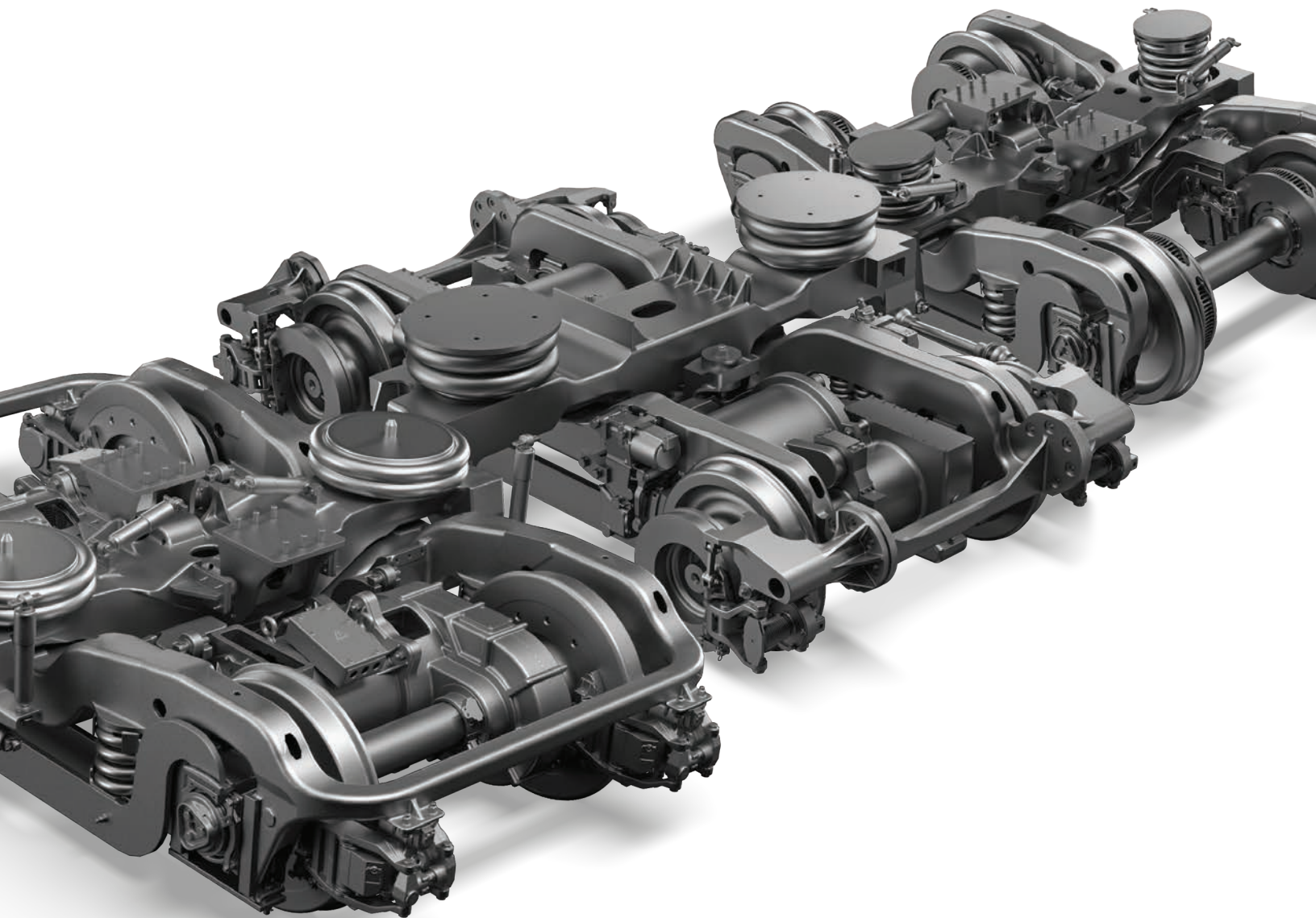


— A M S T E D R A I L - T R A N S I T —

# Meet the Next Generation of Transit Rail Solutions



***Amsted Rail***<sup>®</sup>

# There is No Substitute for Experience

Amsted Rail is the global leader in bogie systems and end-of-car components. In the freight rail market, we continue a 100-year tradition of developing solutions that advance durability, reliability and safety. With the acquisition of service-proven General Steel Industries (GSI) product line, we're now leveraging our performance-driven expertise to redefine what's possible in the transit industry.



# Your All-American Advantage

Headquartered in Chicago, Illinois, Amsted Rail designs, engineers, tests, and manufactures our entire suite of transit products in the United States. State-of-the-art facilities are spread across the USA, combining our operational expertise with a manufacturing footprint that has grown with this country's expanding rail needs for more than a century.

## Camp Hill, PA

- End-of-Car Couplers
- Waughmat Draft Gears
- Yokes
- Crash Energy Management

## Chicago, IL

- Corporate Headquarters

## Homer, MI

- Process Machining

## Hammond, IN

- Suspension Coil Springs

## Granite City, IL

- Foundry Processes and Machining
- Global Engineering & Test Lab
- Bogie Assembly
- Bogie Overhauls

## Paragould, AR

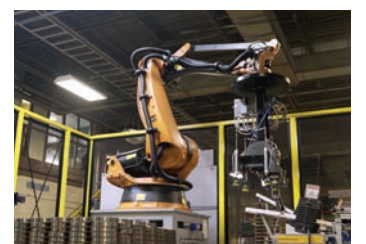
- Axles

## Petersburg, VA

- BRENCO® Bearings

## Greenville, SC

- System Assembly
- Work Car Bogies







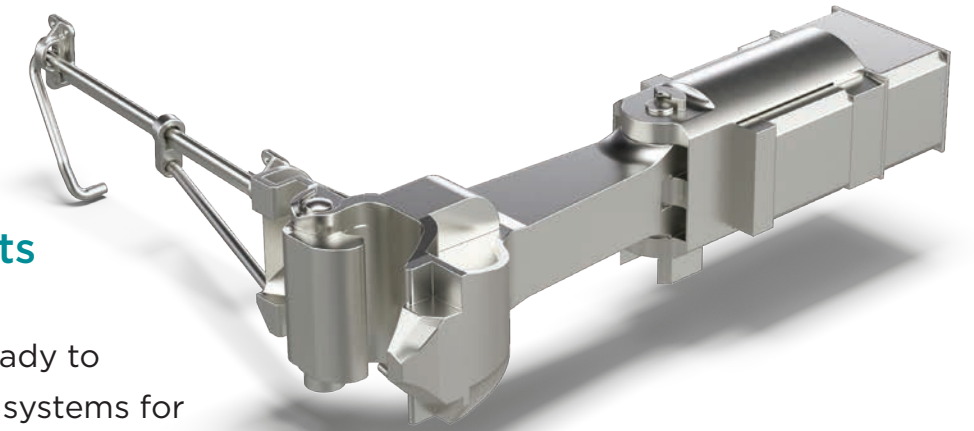
# The Complete Package for Your Transit Needs

## Bogie Assembly, Systems and Components

- Amsted Rail provides complete, ready-to-roll Transit Bogie Systems
- Cast steel designs are built on service-proven GSI platforms
- Components, including H-frames, bolsters, wheelsets, axles, coil spring suspension and bearings, are manufactured in the USA at our state-of-the-art facilities
- Full bogie overhaul kit packages to keep your passengers moving
- Lowest lifecycle costs as demonstrated by thousands of bogies now in operation
- The most sophisticated dynamic and structural analysis of complete transit bogie systems
- Designs surpass FRA, AAR, PRIIA, and APTA standards

## End-of-Car Components

- Only Amsted Rail stands ready to deliver bundled end-of-car systems for transit applications
- American-made Type H Tightlock couplers, yokes, knuckles, draft gears, pins and radial connectors designed for intercity and commuter cars
- Waughmat style draft gears available as components and assemblies
- Optional crash energy management system placed at rear-end of coupler/yoke assembly for extra passenger protection
- Thousands of components in service with transit operators across the USA
- Type E & F couplers, yokes and draft gears for diesel locomotives
- Only North American supplier of new elastomeric locomotive draft gears



***OEM Bogie Systems and End-of-Car components are designed and manufactured to meet requirements on all your applications:***

- Single-level passenger cars
- Multi-level passenger cars
- Crane cars
- Pump cars
- Flat cars
- Vacuum cars
- Hopper cars
- Ballast cars
- Tank cars
- Continuous weld cars
- Refuse cars
- Revenue collector cars
- Snow removal cars
- Locomotives



# One Stop for OE Parts and Overhauls

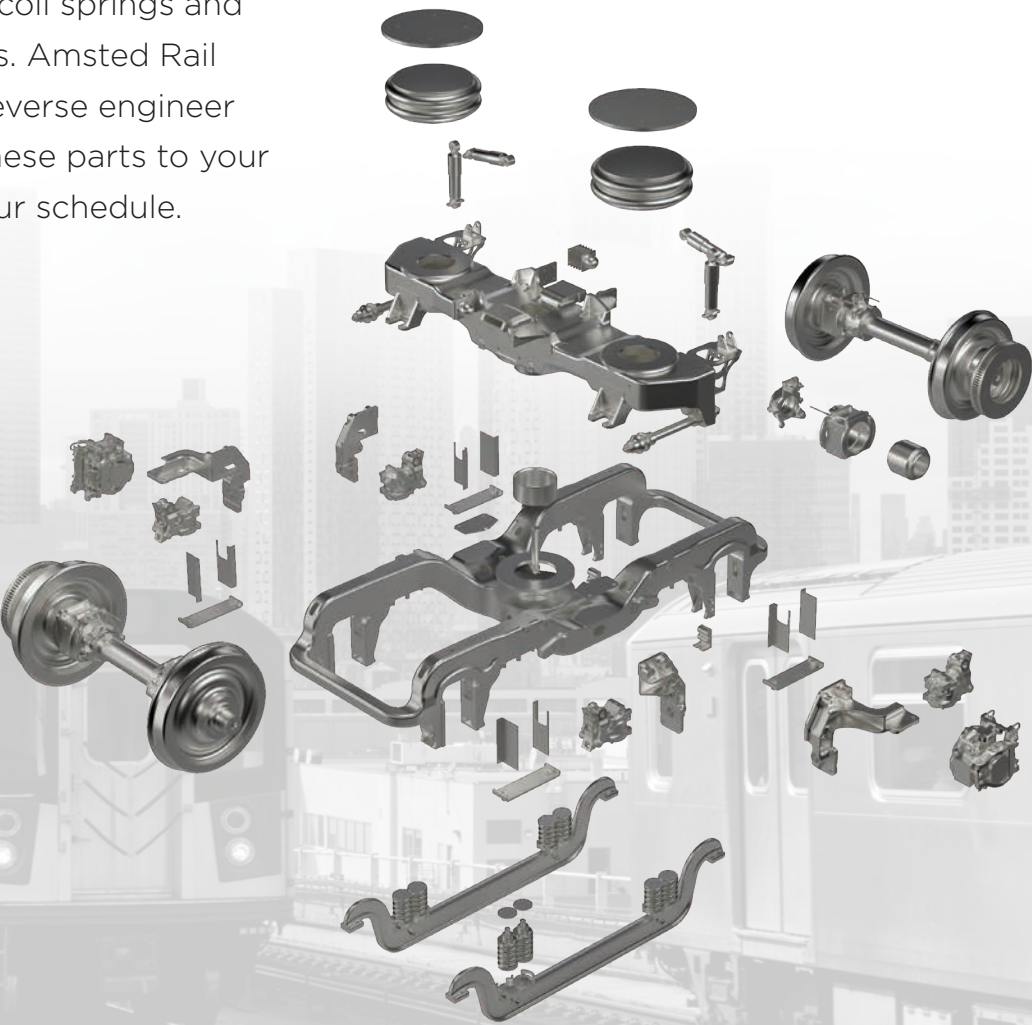
## Bogies

Amsted Rail has the in-house engineering and production capabilities to overhaul any manufacturer’s bogies, not just our own. The process includes disassembly, shot-blasting frames and major components, digital inspection, painting, and reassembling parts to “like new” specifications.

We also provide parts or complete part kits, including axles, journal bearing housings, suspension coil springs and all critical components. Amsted Rail has the expertise to reverse engineer or custom engineer these parts to your specifications – on your schedule.

## End-of-Car

Amsted Rail has the capacity to inspect and overhaul end-of-car systems and provide a full range of individual components, including those for locomotives. As a single-source supplier, you can depend on us for the most exclusive items. We are the only domestic supplier of couplers fitted with highly efficient elastomeric draft gears.



# Your Assurance of Unmatched Reliability



Amsted Rail is the only transit bogie manufacturer in America with both internal modeling and dynamic simulation expertise, along with in-house testing facilities to validate.

Our transit division builds on Amsted Rail’s expertise in testing undercarriage and end-of-car components to meet customer specifications. Next generation machines allow us to push the envelope, subjecting complete transit bogie systems to the most rigorous testing.

Available Test Machines		
Capacity	Notes	
MTS Static and Dynamic Load Frame	Static capacity 545,000 kg (1.2M lb)	AAR M-202
	Dynamic capacity 318,000 kg (700,000 lb)	AAR M-202
Seismic Load Reaction Floor and Portal Frame	Dimensions 6.7m x 7.6m (22 ft x 25 ft) 17 actuators ranging from 5,000 kg (11,000 lb) to 50,000 kg (110,000 lb)	AAR M-202
MTS Bolster Dynamic Test Machine #1	300,000 kg (660,000 lbs)	AAR M-202
MTS Bolster Dynamic Test Machine #2	200,000 kg (440,000 lbs)	AAR M-202
Sideframe Dynamic Test Machine #1	32.5 MT axle load	AAR M-203
Sideframe Dynamic Test Machine #2	50 MT axle load	AAR M-203
Coupler/Knuckle Dynamic Test	1.36M kg (3M lb)	AAR M-216
Spring Dynamic Test (8 station)	All Rail Truck Springs	
Multi Axis Dynamic Test Machine	Vertical - 200,000 kg (440,000 lb) Warp - Quantity 2 @ 25,000 kg (55,000 lb) Lateral - 16,000 kg (35,000 lb)	Full Truck Assembly
Static Test Machine	454,000 kg (1,000,000 lb)	AAR M-202, M-203, M-205, M-211

# About Amsted Rail

Amsted Rail is the world's leading provider of undercarriage and end-of-car railcar components, with facilities spanning over 50 locations across 6 continents.

Through our state-of-the-art manufacturing processes, Amsted Rail is redefining industry standards for innovation and technology, providing our customers worldwide with unmatched performance and reliability for the long haul.

## Ride with Our Transit Division

To get up to speed with our growing portfolio of products and services for the transit rail market, visit [amstedrail.com/transit](https://amstedrail.com/transit), or contact us directly at **1.800.621.8442**

