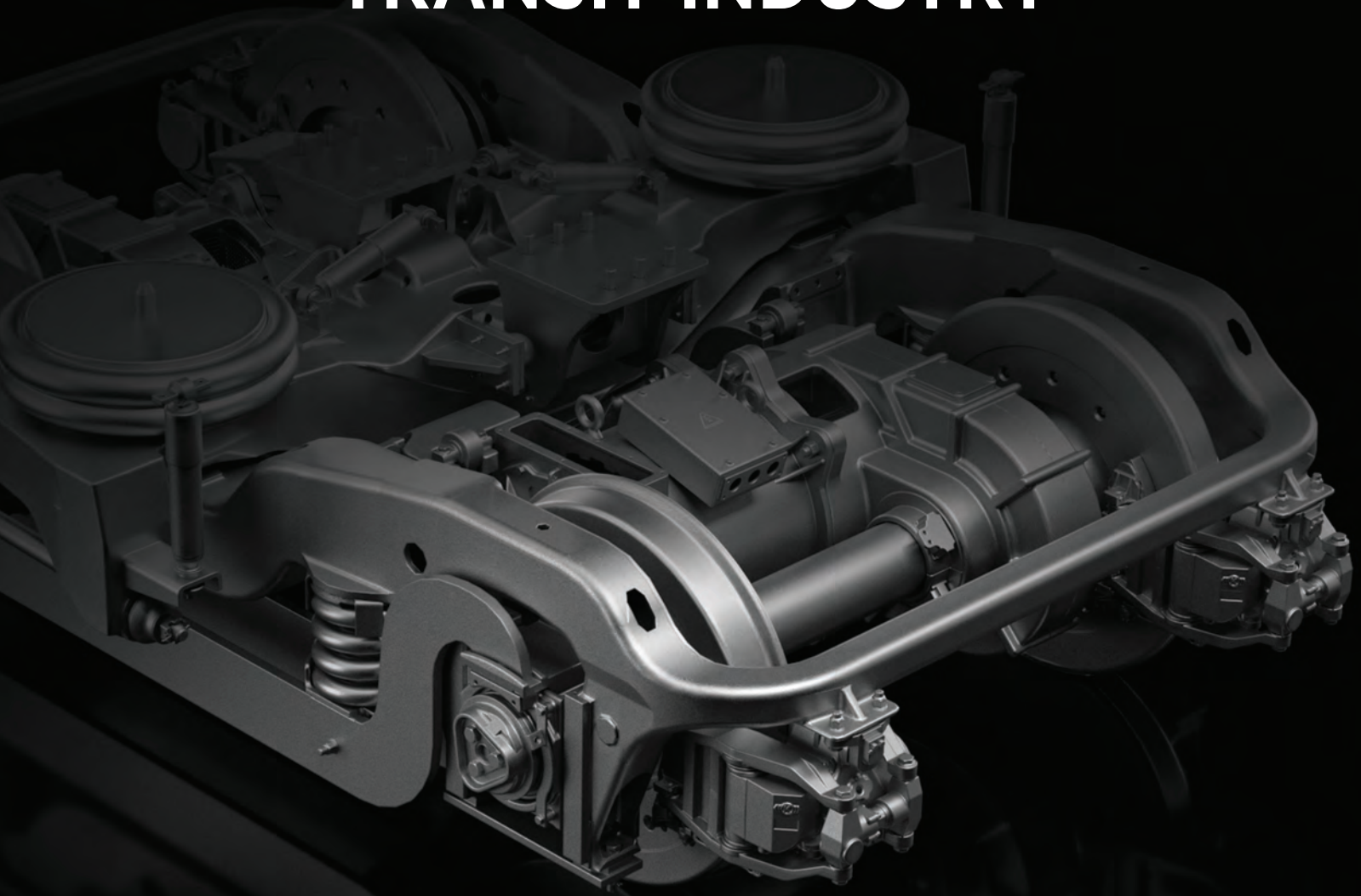


HIGH-RELIABILITY
RAIL SOLUTIONS
FOR THE
TRANSIT INDUSTRY



TRANSIT

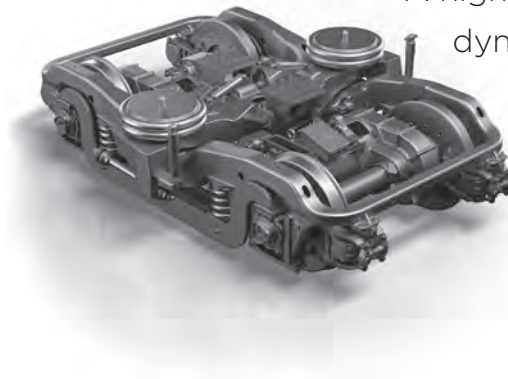
Amsted Rail[®]

SERVICE-PROVEN
PRODUCTS
THAT
GO THE DISTANCE



Amsted Rail is the global leader

in truck systems and end-of-car components. For more than a century, Amsted Rail has provided performance-driven solutions that deliver durability, reliability and safety to the global freight rail market. With the addition of service-proven General Steel Industries (GSI) truck designs, Amsted Rail is uniquely positioned to directly support the critical requirements of the transit industry.



Engineered to demanding industry standards

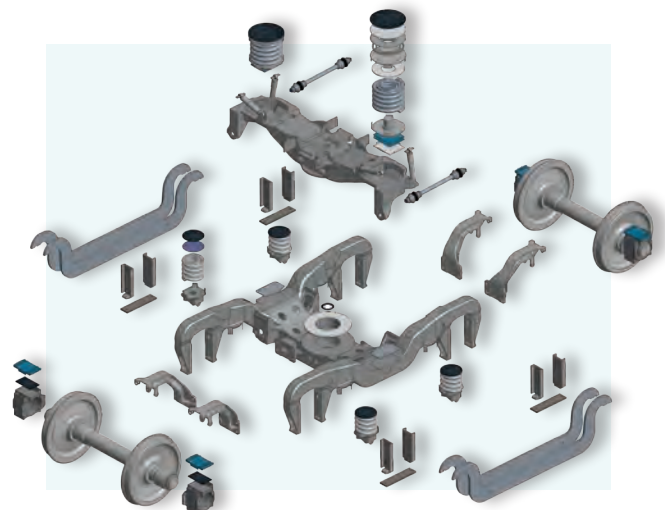
Headquartered in the United States, Amsted Rail's transit product portfolio is expertly designed, engineered, tested and manufactured in the USA. Leveraging Amsted Rail's state-of-the-art engineering and performance testing centers, all products are manufactured to surpass even the most rigorous standards.

A highly sophisticated servo-hydraulic dynamic testing machine allows Amsted Rail to be one of only a few companies capable of offering complete transit truck testing.

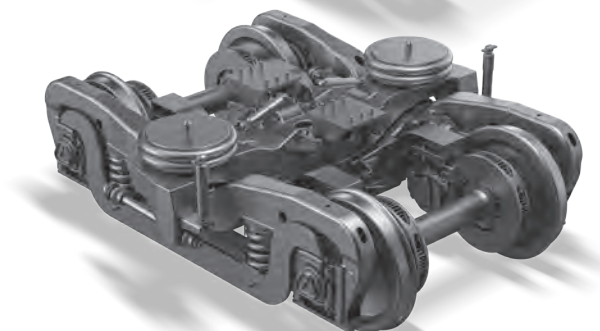
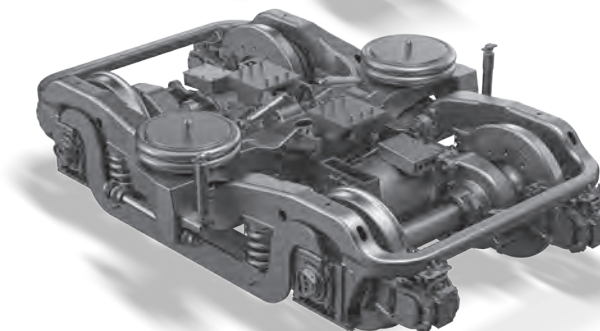
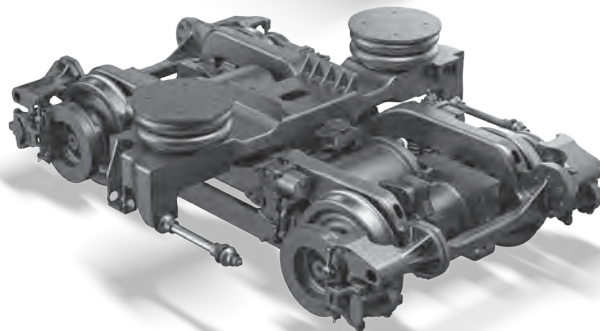
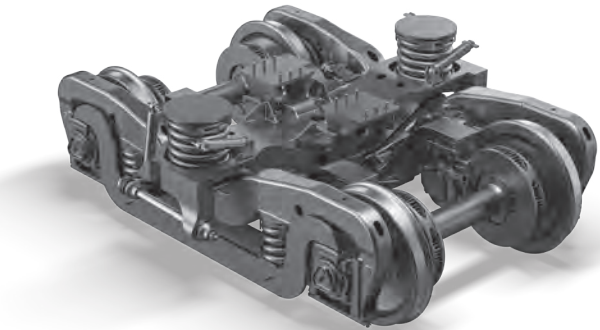
BROAD RANGE OF CAPABILITIES FOR THE TRANSIT MARKET

Truck Assembly, Systems and

- Amsted Rail Transit is a provider of complete Transit Truck Systems manufactured at its facilities in the USA
- Thousands of trucks using the GSI design, now owned by Amsted Rail, are in service across the USA
- Proven GSI product line consists of Inboard and Outboard journal bearing designs
- Advanced Dual Suspension Systems – Primary and Secondary
- Coil Spring, Chevron Spring Pads and Air Spring Cushion
- Axles manufactured at state-of-the-art facility
- Brenco® tapered roller bearings
- Full catalog of maintenance parts to keep your passengers moving
- Designs surpass CFR, FRA, PRIIA, and APTA standards

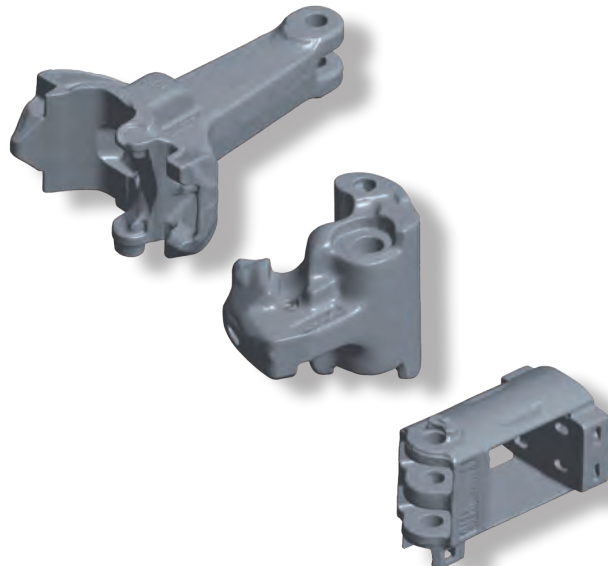


Components



End-of-Car Components

- USA manufactured H-Tightlock Couplers, Yokes, Knuckles, Pins and Radial Connectors
- Rigorous testing and proven history at Camp Hill, PA facility
- Thousands of components in service with transit operators across the USA
- Designed for demanding intercity and commuter cars
- Ready to meet all your critical MRO requirements from parts to complete assemblies

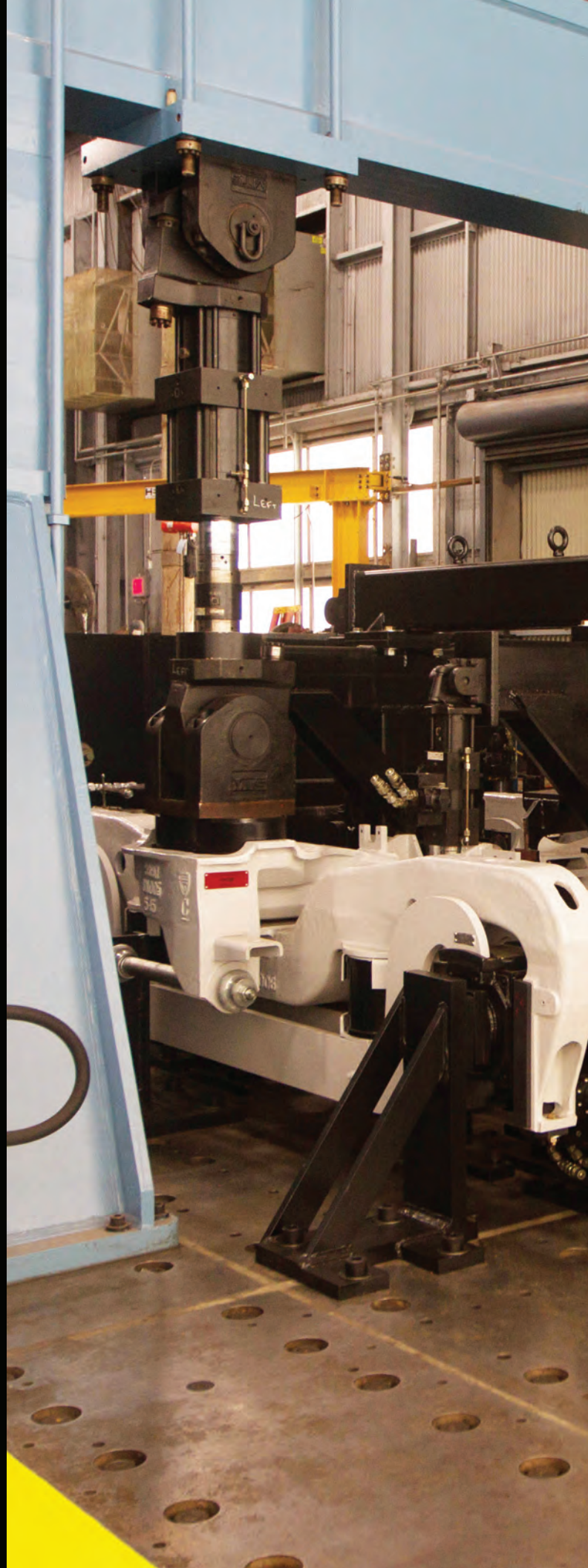


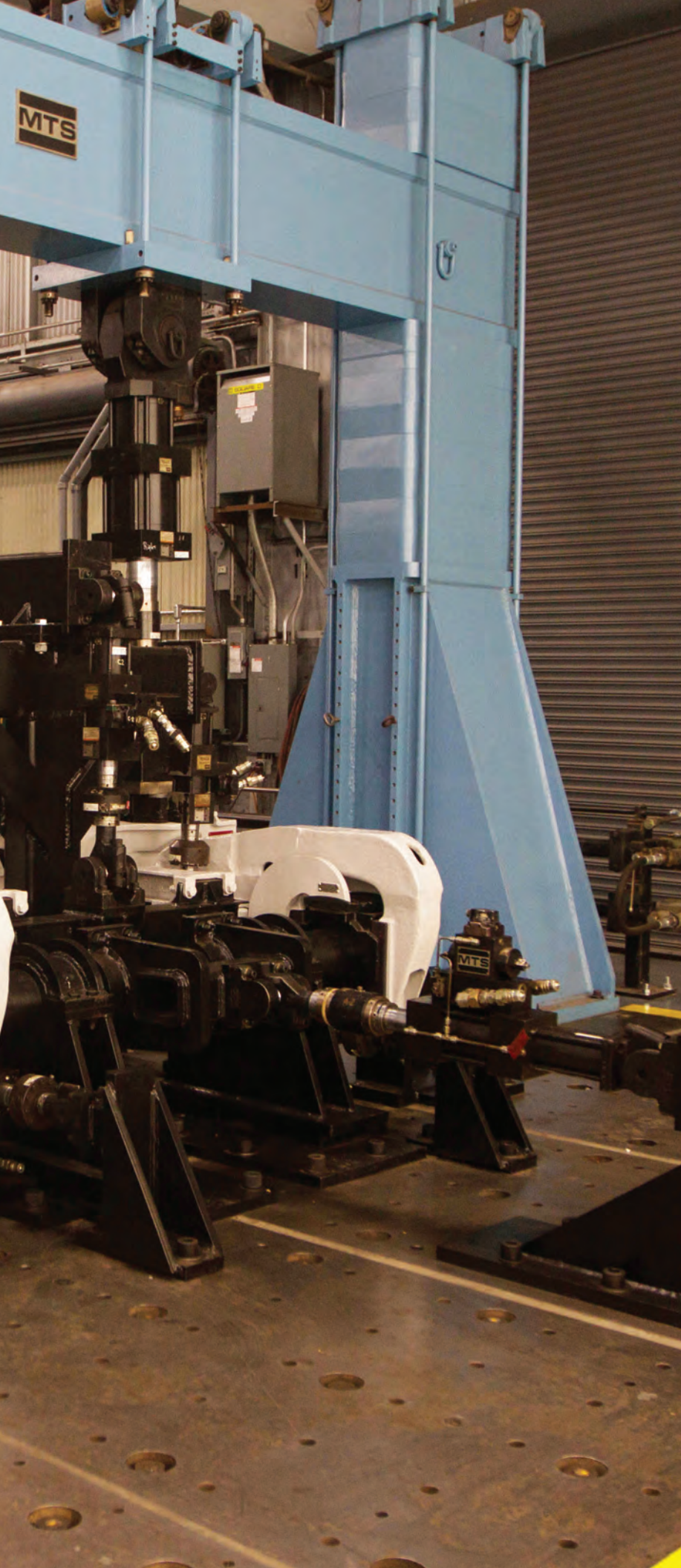
MADE IN THE USA

STATE-OF-THE-ART TESTING FACILITIES

Amsted Rail has extensive experience testing rail components to meet the most demanding specifications. We've invested heavily in the latest testing machinery at our laboratory location in Granite City, IL. It's your assurance of unmatched reliability.

- Static and Dynamic testing
- Stress/Strain Analysis
- Truck Design Validation
- Test Regimens to Customer Specification





Available Tests

- Static and multi-axis dynamic testing of Complete Truck Systems
- Static and dynamic testing of Truck Frames and Bolsters
- Static and dynamic testing of Couplers, Yokes and Knuckles
- Fatigue testing of Springs and Resilient Elements
- Stress and strain investigations
- Failure analysis
- Computer simulations

Additional R&D Capabilities

- *Amsted Rail is the only transit truck manufacturer in the USA with both internal modeling and dynamic simulation expertise, as well as the in-house testing facilities to validate*
- Residual stress analysis
- Bolt torque/clamp load testing
- Fabrication shop – tooling, fixtures, repairs

Get on board our transit rail program

To learn more about our growing portfolio of products and services for the transit rail market, visit amstedrail.com/transit, or contact us directly at 1.800.621.8442

About Amsted Rail

Amsted Rail is the world's leading provider of undercarriage and end-of-car railcar components, with facilities spanning over 40 locations across 6 continents.

Through our state-of-the-art manufacturing processes, Amsted Rail is redefining industry standards for innovation and technology, providing our customers worldwide with unmatched performance and reliability for the long haul.

TRANSIT

