

WE-4900

Coupler Carrier for "F" Type Draft Sills and Rotary Dump Cars



Product Benefits

- Eliminates wear on coupler shank and carrier basket. No metal-to-metal contact.
- Car Set weighs 42 to 46 pounds less than steel carrier.
- Eliminates the need for basket wear plate application.
- Comes in four sizes for maximum flexibility in adjusting coupler height.
- New design provides higher load capacity.
- Patented and AAR approved.
- Longer service life.



Amsted Rail

AMSTED RAIL'S HOLLUBE® WEAR PREVENTION PRODUCTS

WE-4900

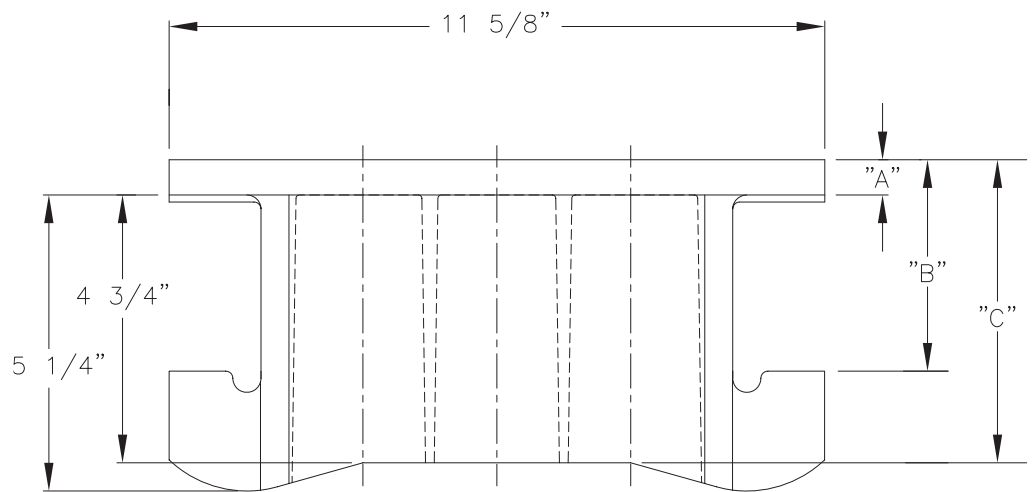
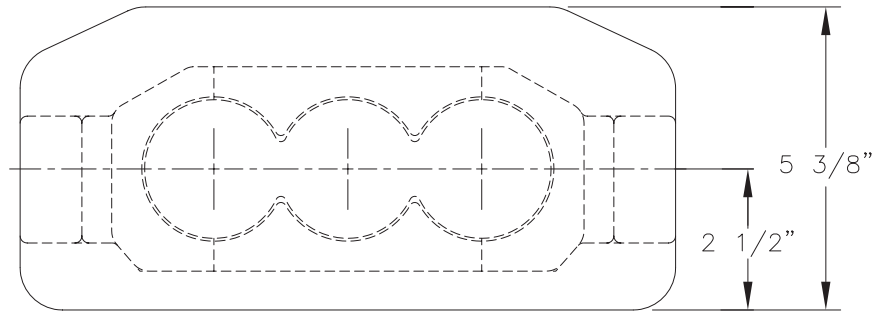
Coupler Carrier for "F" Type Draft Sills and Rotary Dump Cars

Physical Properties

- Climate limitations:
-70°F to +180°F
- Surface load capabilities:
1000 psi
- Coefficient of friction:
.15
- Deflection:
@ 1000 psi = .007"
- Color: dark blue

Application Notes

- Coupler carrier and coupler shank must be smooth; free of sharp edges, weld splatter, and/or foreign material.
- Lubrication is not required.



Part Number	DIM A	DIM B	DIM C
WE-4900-1	5/8"	3 3/4"	5 3/8"
WE-4900-2	7/8"	4"	5 5/8"
WE-4900-3	1 1/8"	4 1/4"	5 7/8"
WE-4900-4	1 3/8"	4 1/2"	6 1/8"

