

WE-4004

Coupler Carrier for Rotary Dump Cars



Product Benefits

- Eliminates wear on coupler shank and carrier basket.
- Weighs only 9 pounds. 18 pounds less than steel.
- Comes in four sizes for maximum flexibility in adjusting coupler height.
- Unconditionally AAR approved.
- 10 year/one million mile warranty* when installed in new cars.

*whichever comes first



WE-4004

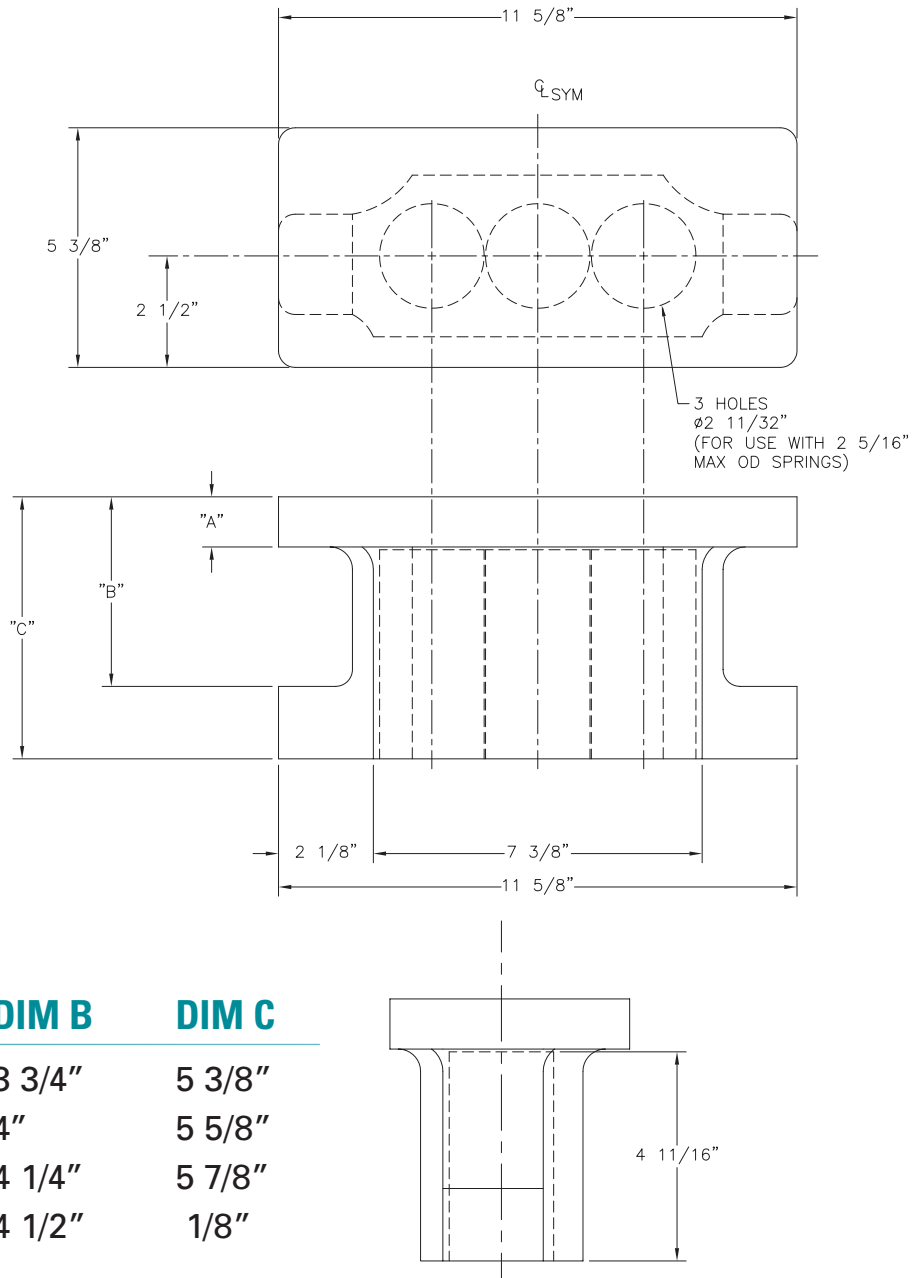
Coupler Carrier for Rotary Dump Cars

Physical Properties

- Climate limitations:
-70°F to +180°F
- Surface load capabilities:
1000 psi
- Coefficient of friction:
.15
- Deflection:
@ 1000 psi = .007"
- Color: orange

Application Notes

- Coupler carrier spring basket and coupler shank must be smooth; free of foreign material, weld splatter, and/or sharp edges.
- Lubrication is not required.



Part Number	DIM A	DIM B	DIM C
WE-4004-1	5/8"	3 3/4"	5 3/8"
WE-4004-2	7/8"	4"	5 5/8"
WE-4004-3	1 1/8"	4 1/4"	5 7/8"
WE-4004-4	1 3/8"	4 1/2"	1/8"

