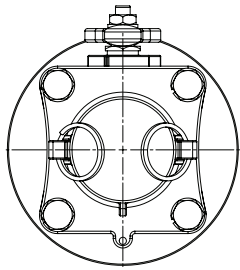


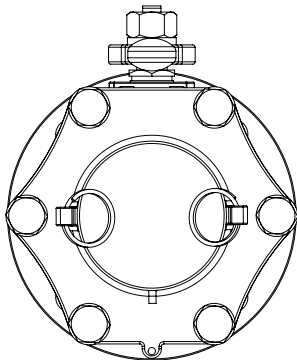
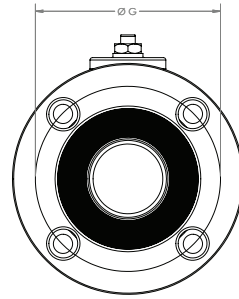
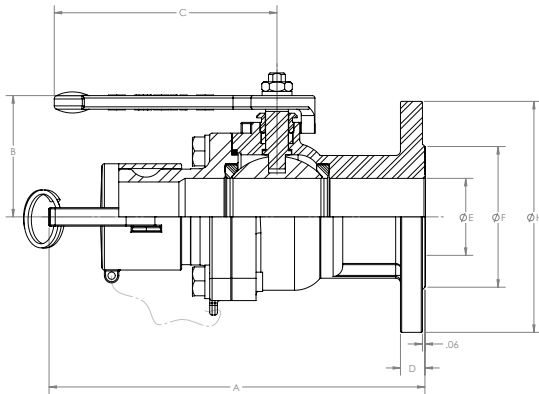
Quick Connect

Innovative design to meet the demands and stand up to the rigors of general tank car service

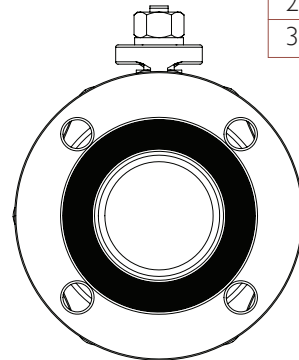
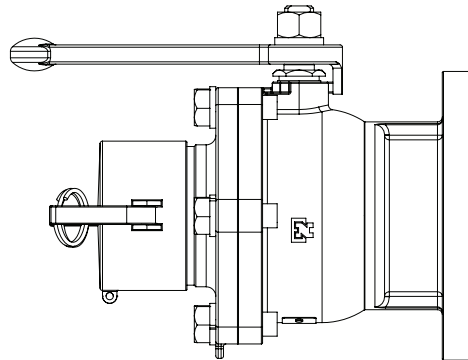
- AAR approved
- Full port design for maximum flow
- PTFE seats and seals
- Available in 2" and 3" models
- Bolted cap-to-body design simplifies repairs
- Stainless Steel construction eliminates corrosion
- Lowers the overall profile inside the housing cover
- Eliminates damage to NPT threads
- No need for plugs or external fittings
- Uses industry standard camlock dust cap
- Equipped with Stainless Steel cast handle
- Repair kits available



2" VALVE SHOWN



3" VALVE SHOWN



Part Numbers	
2" version	35800-2
3" version	35800-3

SIZE	A	B	C	D	E	F	G	H	PART NUMBER	WT (LBS)
2"	9.87	3.14	5.79	0.63	2.00	3.63	4.75	6.00	35800-2	15.5
3"	11.08	4.38	7.50	0.81	3.15	5.00	6.00	7.50	35800-3	37.5

**Amsted Rail, the global leader
in fully integrated freight car systems
for the heavy haul rail market.**



Amsted Rail has been an industry leader in freight railroading for more than 100 years. Our experience, dedication and efficiency in servicing today's demanding heavy haul operations is unequalled as we keep railcars rolling in some of the world's toughest railroad environments. To learn more, visit www.amstedrail.com.