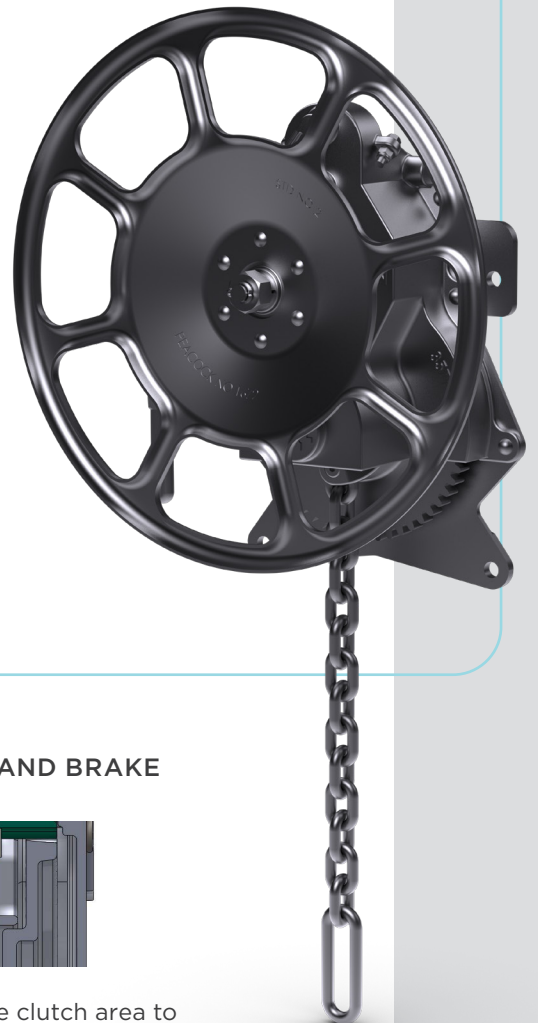




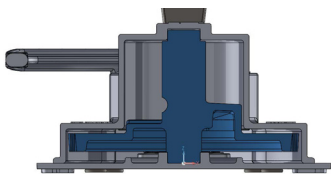
ELLCON-NATIONAL[®] MODULAR HAND BRAKE MODEL SERIES 35770

Enhanced performance and extended service life in the harshest operating conditions

- ▶ AAR Approved
- ▶ Available in long release lever or short release lever
- ▶ 80% less area for ingress of road grime into unit, preventing sluggish release
- ▶ Designed for high vibration service
- ▶ 31% fewer components to wear
- ▶ No main bearings to fail
- ▶ Group N designation
- ▶ Outlasts competitors' hand brakes by up to four times



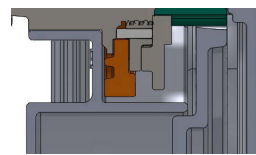
COMPETITOR HAND BRAKE



The open area allows for ingress of road debris.

VS.

AMSTED RAIL HAND BRAKE



The design covers the clutch area to reduce ingress of road debris.

ADDRESSING COMMON FAILURES

72% of hand brakes require replacement due to mechanical failures that render them inoperative, according to AAR car repair billing data.

► Quick Release Lever Failure

EN hand brakes tackle a prevalent issue by reducing component count by 31%, preventing excessive free movement, and mitigating vibrational wear during motion.

► Front Hand Wheel Bearing Failure

The second leading cause of hand brake failure is addressed by replacing traditional ball bearings, used on most other hand brakes, with modern composite plane bearings. This innovation eliminates false brinelling, load capacity limitations, and seal failures while doubling vibrational force endurance.

SUPERIOR CONTAMINATION RESISTANCE

EN's innovative hand brake design reduces openings by over 80% to prevent ingress of road grime better than any other commercially available hand brake, even in highly contaminated environments. This limits diminished performance associated with ingress and traditional hand brake designs.

PRELIMINARY TRIAL DATA IN IRON ORE SERVICE

Upon inspection after 1.5 years in operation, covering over 63,000 miles and undergoing more than 120 rotary dumps, Amsted Rail's Ellcon-National® modular hand brake demonstrated exceptional performance. In contrast, traditional brakes typically last less than one year in service.

AMSTED RAIL, THE GLOBAL LEADER IN FULLY INTEGRATED FREIGHT CAR SYSTEMS FOR THE HEAVY HAUL RAIL MARKET.

Amsted Rail is the world's leading provider of undercarriage and end-of-car railcar components, with facilities spanning six continents. Through our state-of-the-art manufacturing processes, Amsted Rail has been redefining industry standards for innovation and technology since 1877, providing our customers worldwide with unmatched performance and reliability for the long haul.

To learn more, visit www.amstedrail.com.

