

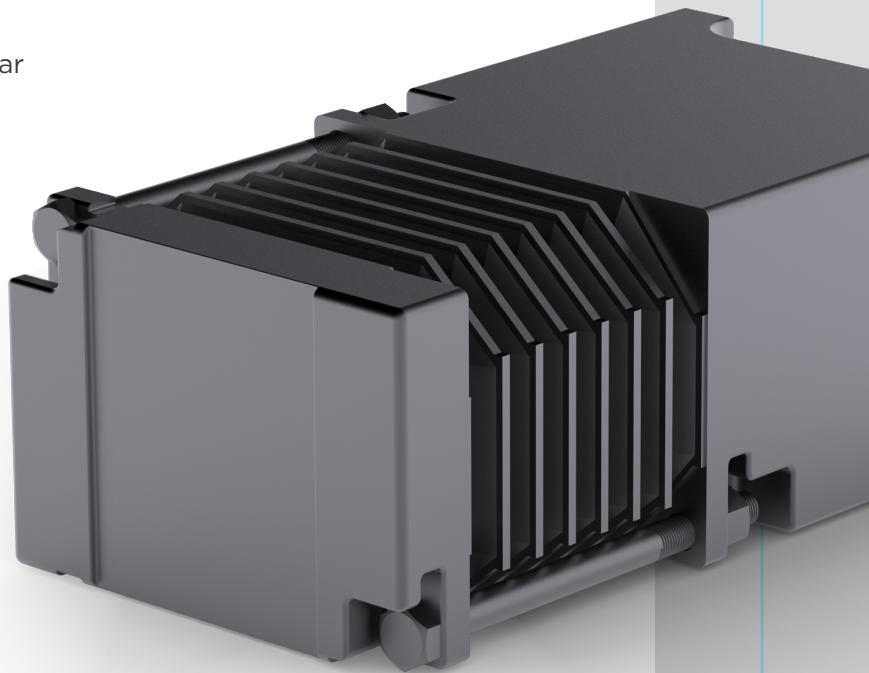


DRAFTMASTER™ DRAFT GEAR

The next generation of freight draft gears built for the rigors of heavy hauling

Tailored for iron ore service and indexing operations, Amsted Rail's DraftMaster draft gear seamlessly integrates into all existing or new railcars, requiring no changes to draft gear pockets, couplers, yokes or followers.

- ▶ Reduced slack and in-train forces, resulting in:
 - ▶ Less component damage to coupling system
 - ▶ Fewer train separations
 - ▶ Reduced wagon sill and draft stop wear
- ▶ Service life up to 20 years
- ▶ Less componentry
- ▶ Improved service life over friction; easy replacement of pads
- ▶ Easily reconditioned without specialized assembly or test equipment
- ▶ Can be locally assembled



APPLICATIONS:

The DraftMaster™ draft gear is derived from technology proven in service for decades and currently utilized in applications around the world, including:

- ▶ Majority of locomotives running in North America, Brazil, Australia, New Zealand and India
- ▶ Iron ore service in Canada and Brazil
- ▶ Intermodal service in New Zealand
- ▶ Drawbarred intermodal and coal applications in Australia, North America and India
- ▶ Indexing arms in Australia

WHAT OUR CUSTOMERS ARE SAYING ABOUT THE DRAFTMASTER DRAFT GEAR:

“Better performance than friction gears for all metrics.”

– Australian University

“Fewer shocks and accelerations than with friction.”

– Canadian Iron Ore Operator

“Lower in-train forces and fewer shocks than with conventional steel friction.”

– North American Class 1 Railroad

AMSTED RAIL, THE GLOBAL LEADER IN FULLY INTEGRATED FREIGHT CAR SYSTEMS FOR THE HEAVY HAUL RAIL MARKET.

Amsted Rail is the world's leading provider of undercarriage and end-of-car railcar components, with facilities spanning six continents. Through our state-of-the-art manufacturing processes, Amsted Rail has been redefining industry standards for innovation and technology since 1877, providing our customers worldwide with unmatched performance and reliability for the long haul.

To learn more, visit www.amstedrail.com.

